

THE VOICE



INSIDE THIS ISSUE:

ASK Golf Classic	2
Family Events	3
ASK Ride for Autism	4
Support Group Meetings	5
Hiking Group Schedule	6
Theater Group Improv Night	6
Social Group Bowling Party	6
Conferences and Workshops	7
Meijer Gardens Photos	8
"Pied Piper" Photos	9
Puzzle Partners Schedule	10
Easter Egg Hunt Photos	11
Social Group Photos	12
Puzzle Partners Photos	12
Clubhouse Photos	13
Walk Thank Yous and Photos	14
Walk Sponsors and Photos	15

Calendar:

Board Meetings

ASK Office—160 68th St. SW

Grand Rapids, 49548

6:30 p.m.

- July 11, 2022
- August 8, 2022
- September 12, 2022

Family Event—Cookout

- July 30, 2022

Family Event—John Ball Zoo

- August 13, 2022

Social Groups for Teens and Young Adults

- Bowling Party—Spectrum Lanes
August 21, 2022

Parent/Caregiver Support Groups

- 8/16/22 (Newly Diagnosed)
- 8/16/22 (Transition Age)

Theater Group Improv Night

- July 20, 2022

Golf Classic

- July 29, 2022

Hiking Group

- July 23, 2022
- August 13, 2022
- September 17, 2022

Ride for Autism

- September 10, 2022



NEWS FROM ASK

Happy Summer!

Hope everyone is doing well, staying healthy and enjoying being outside.

This spring, we had so much fun! Huge crowds at our Easter Egg Hunt and our Walk for Autism, two amazing performances of the "Pied Piper" from our Theater Group, tons of activities and friendship and camaraderie at our Clubhouse, Social Group, and Puzzle Partners groups, hiking some wonderful trails, and so much more! It's been a great couple of months, and we couldn't do it without all of you, so thank you!

We have so many volunteers who work tirelessly to make our Theater Group possible! Thank you to Directors Laura, Holly, and Madeline. They are simply amazing and never seem to run out of enthusiasm, energy or patience. Thanks, too, to Ms. Laura S., Mr. Mike, Ms. Katie, Ms. Karen, Ms. Tami, Ms. Michelle, Anna, Cameron, and Parker who helped with sets and costumes and

mentored actors so everyone who wanted to could participate. We are so proud to be able to put on a successful play AND include all of our friends!

Looking to the future, we are gearing up for our regular programming, offering lots of social opportunities for all ages, and continuing to support and help families.

One way you could help would be to support our upcoming fundraisers: our Golf for Awareness Event and our Ride for Autism.

The Golf Event takes place on Friday, July 29, at Thornapple Pointe Golf Club. It's \$100 to golf, and that includes lunch, prizes, dinner, and a raffle and Silent Auction. If golf isn't your thing, we are always in need of sponsorships, which start at just \$150, or even donations of items or gift cards for the raffle and auction.

The Ride for Autism takes place on Saturday, September 10, at Riverside Park. There is a 1 mile fun ride, along with a 25 mile ride, a 50 mile ride, and a 100 mile ride. We ask that riders gather pledges and donations. We are rolling out a new platform for this event soon, too, so stay tuned.

Thanks for being part of the family of ASK! Have a great rest of summer. Hope to see you soon!

Pam Liggett
ASK Executive Director



Golf Classic

July 29th
Page 2

Ride for Autism

September 10
Page 4



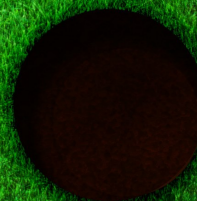
**AUTISM SUPPORT OF
KENT COUNTY**



GOLF CLASSIC

**JULY 29th, 2022
1:00 PM SHOTGUN START**

Proceeds from this event will be used to make life better and more productive for individuals with autism.



Sign up at: autismsupportofkentcounty.org/ask-golf-classic

THORNAPPLE POINTE GOLF COURSE

7211 48TH STREET SE
GRAND RAPIDS, MI 49512

**SPONSORSHIPS
AVAILABLE!**

\$100

PER PERSON

\$360

FOURSOME

FOR MORE INFORMATION CALL US AT
616-752-8577 or 616-822-0944
OR EMAIL: pamliggettasc@gmail.com

This event has been taking place for over 15 years, has a great following of loyal golfers, and event proceeds go to the important programs of Autism Support of Kent County. We provide over \$80,000 worth of programs and services annually that benefit the special people we serve!

JULY FAMILY EVENT: COOKOUT!



Saturday, July 30, 2022
11:00 AM — 1:00 PM
Veterans Memorial Park
355 48th St. SE, Kentwood, 49548

This event is open to anyone with autism and their families. Hot dogs, chips, cookies, and pop provided. **This park has a playground and splash pad!** Cost is \$15 per family.

Pre-registration is required. Walk-ins are not allowed. Register by clicking on the link: <https://www.autismsupportofkentcounty.org/new-products/registration-for-july-2022-family-cookout>

You will complete the steps and then need to go to the CART on the top right corner to enter payment information. (You will get a confirmation email when you have completed registration successfully.)

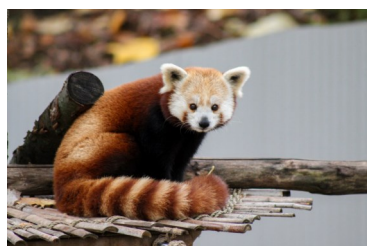


We will tour the zoo together from 11:00 am to 1:00 pm. Meet at the ticket counter and main entrance.

We have some zoo passes from the Walk for Autism to share, so each family can get up to THREE free zoo passes. **This is available for the first 12 families.** (You can purchase the rest that you need that day at the ticket counter at the Zoo.)

Register here:

<https://www.autismsupportofkentcounty.org/new-products/2022-family-event-to-the-zoo>



AUGUST FAMILY EVENT:

TRIP TO JOHN BALL ZOO!



Saturday, August 13, 2022
11:00 AM — 1:00 PM

RIDE FOR AUTISM

SATURDAY, SEPTEMBER 10, 2022 @ 9 AM
(RAIN DATE SEPTEMBER 11)



100 MILE, 50 MILE, OR 25 MILE RIDE ALONG
MUSKETAWA AND WHITE PINE TRAIL

*****ONE-MILE RIDE FOR KIDS AT RIVERSIDE PARK *****
(free entry and each rider will get a t-shirt)

PROCEEDS BENEFIT AUTISM SUPPORT OF KENT COUNTY

*To sign up or make pledges, contact Rick Elias
at (616) 516-6856 or richardeliasdds@hotmail.com*

- ★ \$100 ENTRY FEE. FREE ENTRY WITH \$250 IN PLEDGES/SPONSORSHIPS
- ★ ONE BREAK EVERY 20 MILES FOR ENERGY FOOD AND HYDRATION
- ★ CABOOSE TO FOLLOW IN CASE OF BREAKDOWN

Parent/Caregiver Support Group For Newly-Diagnosed Families

*Tuesday, August 16, 2022 (In-Person)
6:00—7:30 pm*

This group is open to anyone, but will focus on issues facing newly-diagnosed families.

This group is open to everyone and is facilitated by ASK Executive Director, a seasoned parent, a School Social Worker, and an Autism Teacher Consultant.

We will meet in room #5 of the Special Olympics Center where we house our office. It's located at 160 - 68th Street SW, Grand Rapids, between US131 and Division, on the south side of the street. Park in the EAST lot and enter under the BLUE triangular roof, and head down the hall to room #5.

Contact Pam with questions or to RSVP:
Voicemail at 616-752-8577, text at 616-822-0944, or email at PamLiggettASKC@gmail.com

Parent/Caregiver Support Group For Transition-Age Issues

*Tuesday, August 16, 2022 (In-Person)
7:30—9:00 pm*

This group is open to anyone, but will focus on issues facing kids exiting the school system into employment, recreational programs, and housing.

This group is open to everyone and is facilitated by ASK Executive Director, a seasoned parent, a School Social Worker, and an Autism Teacher Consultant.

We will meet in room #5 of the Special Olympics Center where we house our office. It's located at 160 - 68th Street SW, Grand Rapids, between US131 and Division, on the south side of the street. Park in the EAST lot and enter under the BLUE triangular roof, and head down the hall to room #5.

Contact Pam with questions or to RSVP:
Voicemail at 616-752-8577, text at 616-822-0944, or email at PamLiggettASKC@gmail.com

**Visit our website to view and/or
download the ASK Community
Resource Directory:**
www.autismsupportofkentcounty.org



Heart of West Michigan United Way investors can choose to designate all or part of their annual contributions to Autism Support of Kent County.

To designate your gift to ASK, use the United Way Designation Form and write: *Autism Support of Kent County, Grand Rapids, Michigan.* Thank you!

We have a new Hiking Group!

Join us for some exercise, fun, and meeting new friends!

THIS IS OPEN TO ANYONE AGES 10 AND UP AND THEIR FAMILY WHO CAN SAFELY COMPLETE A 60-90 WALK. A guardian must attend!

YOU MUST RSVP TO Pam AT PamLiggettASKC@gmail.com. Please meet up at 10:45 am, as the hike will leave promptly at 11:00 am. If you are late, you may be left behind.

The trails we hike will all be located in various areas of Kent County. We will meet at the actual trailhead to begin each hike. We'll plan on announcing a week in advance to firm-up each respective hike, as they will be cancelled in bad weather. There will be a representative from ASK at each hike to lead the group.

The tentative schedule (pending weather conditions) is as follows.

Saturday, July 23rd – Cascade Peace Park
8900 Grand River Drive SE
Ada, 49301

Saturday, August 13th – Townsend Park
8280 Six Mile Road
Rockford, 49341

Saturday, September 17th – Crahen Valley
4355 Leonard Street NE
Grand Rapids Township, 49525



Theater Group Improv Night!

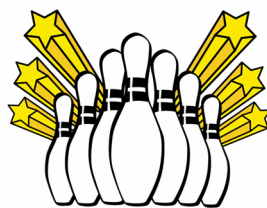
Wednesday, July 20, 2022

6:30 – 8:00 PM

Theater Group is open to anyone ages 12 and up. A guardian must attend, too. This is designed to be fun and to give you a chance to try acting and being on stage. No pressure and no experience required! Please come with a favorite song/musician or a favorite scene from a TV show or movie.

We will meet in the auditorium of the Special Olympics Center, at 160 - 68th Street SW, Grand Rapids. The building is between US131 and Division Avenue, on the south side of the road. Park in the EAST lot and enter under the blue roof, Head down the hall, through double doors to the auditorium.

For more information, please email Pam at
[***PamLiggettASKC@gmail.com***](mailto:PamLiggettASKC@gmail.com)



Social Group Bowling Party!

Sunday, August 21, 2022

5:00 – 7:00 PM

Spectrum Lanes

Back by popular demand – Bowling and Pizza!

This group is open to anyone with autism who is a teen or young adult (12-year-olds welcome too). Join us for fun and friendship!

Cost is just \$10 per teen or young adult. We ask that a guardian attend, too. We meet at Spectrum Lanes, 5656 Clyde Park Ave SW, Wyoming.

Please register here:

<https://www.autismsupportofkentcounty.org/new-products/2022-social-group-bowling-party>

You will need to go to cart to complete registration and pay. An email confirmation will be sent.

Conferences, Workshops and Webinars

Michigan Alliance for Families On-Demand Free Webinar Series

A webinar is an online presentation you can attend without having to leave your home or office. It's an opportunity to hear an expert speak for about an hour on a topic that interests you. These webinars can be viewed at any time on the Michigan Alliance for Families YouTube Channel:

<https://www.youtube.com/user/MichiganAlliance/videos>

Online Learning Opportunities

<https://www.michiganallianceforfamilies.org/upcoming-events/>

Autism Alliance of Michigan List of Virtual and In-Person Community Events:

<https://autismallianceofmichigan.org/events/>

2022 MSU Autism Conference (FREE)

July 28, 2022 9:00 am—4:00 pm

The Henry Center at MSU

3535 Forest Rd., Lansing, MI 48910

The MSU College of Human Medicine Department of Pediatrics and Human Development will host its annual MSU Autism Conference in person at the Henry Center in East Lansing, Michigan. This year's theme, "More than Autism", will feature resource tables and Panel Discussions covering Intellectual Disabilities, ADHD, Medical Complexities, and LGBTQ. This free conference is open to both families and health care professionals. For questions, contact Elizabeth Stanton at stanto52@msu.edu To register:

<https://www.lansing.org/event/2022-msu-autism-conference/39972/>

Annual Michigan Autism Conference

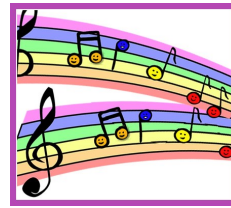
October 6—7, 2022

Radisson Plaza Hotel at Kalamazoo Center

100 W Michigan Avenue

Kalamazoo, MI 49007

<https://wmuace.com/mac>



Music Therapy Videos!

MUSIC THERAPY UPDATE: Thanks to the awesome creativity of the therapists at the Franciscan Life Process Center, we are able to offer and deliver Music Therapy—despite not being able to go into classrooms. Now everyone can get Music Therapy, too! ALL 30 of our custom-made-just-for-you Music Therapy Videos are up on our website now!

Thanks so much to the awesome Music Therapists at the Franciscan Life Process Center!

Anyone is welcome to use these anytime they wish. They are fantastic and can be found under the Resources tab on the ASK website. Enjoy!



COVID-19 POLICIES

- We ask all in attendance to self-screen before deciding to attend. Please do not attend if you are experiencing any symptoms of COVID-19 or have recently been exposed to COVID.
- You will attend our events and programs at your own risk. All programs and services will be conducted in accordance with local restrictions and guidelines in effect at time of program.
- Please call Pam Liggett at 616-752-8577 with any questions or concerns.

STAY SAFE
together we will get through this



Lindsey, from Usbourne Books, is the best!!
 We are so grateful for the donation of
 funds and so many awesome books!
 Our social groups and clubhouse members
 will love these!!!

Thanks, Lindsey!

Are you interested in a Social Group for Elementary-Age Kiddos?

We are gathering interest regarding
 the start of a Social Group for kids
 with autism who are in elementary
 school. Dates and times TBD.

If you are interested, please contact
 Pam — PamLiggettASKC@gmail.com
 or by phone/text to 616-822-0944.

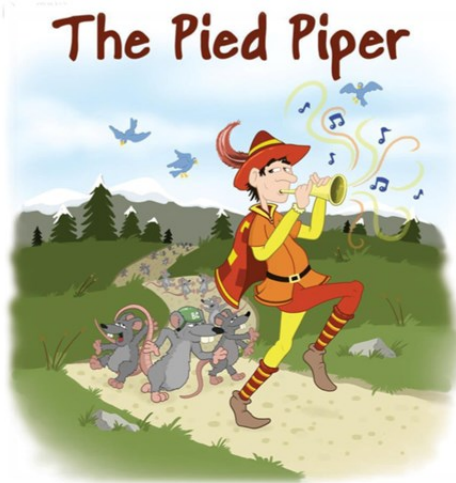
Are you an **adult with autism over
 age 30**, or do you know someone
 who fits that description? If so, join
 us for support, resource-sharing,
 understanding, and friendship.

If you are interested, please contact
 Pam — PamLiggettASKC@gmail.com
 or by phone/text to 616-822-0944.



Meijer Gardens Family Event





Congratulations to the cast and crew of the "Pied Piper"! They gave it their all and the results were fantastic! The joy backstage and on these actors' faces is not something that will soon be forgotten.

Thank you to our amazing directors — Laura, Madeline, Holly and Katie — for pouring your heart and soul into these deserving kids. You ladies are simply the best!

To our mentors — Cameron, Parker, Anna and Michelle — thank you all for standing by week after week to make sure all who wanted to could participate and succeed.

And lastly, thanks to Drew, at the Special Olympics Center, for his assistance with our technical and sound needs.



Puzzle Partners

Puzzle Partners is another one of our Social Group Programs. It is a closed group for individuals with Level I autism and social challenges.

To participate in these groups, you must be verbal and able to communicate back and forth 3-4 times, be free from behaviors, and would be able to attend on your own.

****If you don't meet this criteria, no worries! Come to our general Social Group gatherings that are publicized via our Events page. They are so much fun!****

Under the Puzzle Partners categories, we have two groups: one for YOUNG ADULTS, and one for OLDER ADULTS. We have combined our Teen Group with our other Teen & Young Adult Social Group. Check the EVENTS page for specifics.

These groups meet monthly or bi-monthly. Puzzle Partners creates a safe space for young adults and "older" adults (over age 30) to belong, try new things, make friends, and expand their horizons. The Young Adult Group is led by Jennie. The Older Adult Group is led by Ann Mary.



MEETING DATES FOR JULY 2022:

ZOOM GROUP: Email Ann Mary at amdykstra@gmail.com for more information.

YOUNG ADULTS: July 23 and July 28. Email Jennie at puzzlepartnersya@gmail.com for information.

NEW Young Adult In-Person Discussion Group on July 29. Email Jennie at puzzlepartner-sya@gmail.com for information.

OLDER ADULTS: Email amdykstra@gmail.com for information.

****Check your email for specifics. We do NOT allow walk-ins.**

If you are interested in an opportunity to make friends and have fun, please contact ASK Executive Director, Pam Liggett, for more information. Pam's email is pamliggettaskc@gmail.com. The ASK phone number is 616-752-8577.



Remember ASK in Your Estate Plan

We often receive gifts in memory of an individual who has been touched by autism. Thank you to these special families who think of ASK at such a sad time.

Please remember ASK in your estate plans, too. These gifts are treated with the utmost care and respect. Contact us for more information on how you can include ASK in your charitable giving plans at 616-752-8577.



FAMILY EVENTS

Easter Egg Hunt





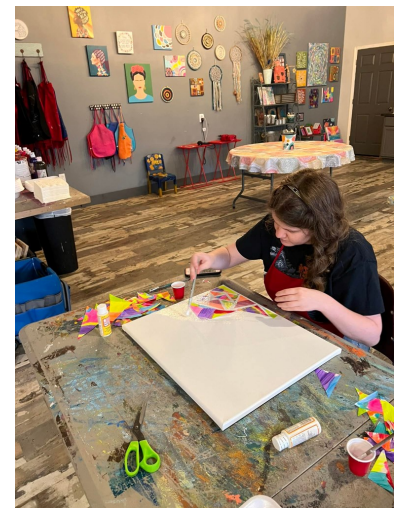
When you shop at **AmazonSmile** and designate Autism Support of Kent County as your charity, Amazon will donate 0.5% of your purchase to ASK. For more information, and to add ASK as your charity of choice, visit: <http://smile.amazon.com>

***Thank you and
happy shopping!***



TEEN/YOUNG ADULT SOCIAL GROUP

Game Night



PUZZLE PARTNERS *at Hearts for the Arts Studio*





CLUBHOUSE SOCIAL PROGRAM

Building Birdhouses

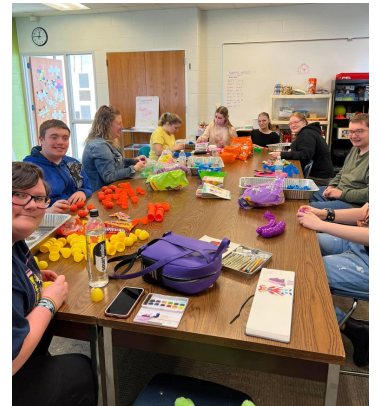
Cooking Activity

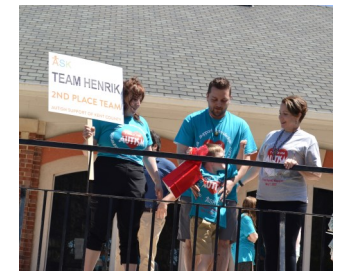
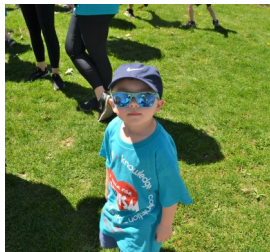
Easter Crafts

Butterflies at Meijer Gardens

John Ball Zoo

Veterans Memorial Park





\$30,000+!

We are thrilled to announce that the 2022 Walk for Autism raised over \$30,000 after expenses!

Thank you so very much to our loyal and generous sponsors, to our many amazing donors, to our awesome walkers, to our terrific teams, and to our dedicated and committed board members and volunteers! Without all of you, we wouldn't exist. Thank you from the bottom of our hearts for giving of your time and financial resources.

Special thanks to our amazing emcee, Steve Amorose, Drummer Josh Dunnigan, the Grand Rapids Fire Department, the Grand Rapids Police Department, American Medical Response, and to Bobby Q's for coming out to offer a delicious lunch for purchase!

Visit the ASK Facebook page to see more photos!

<https://www.facebook.com/autismsupportofkentcounty>



THANK YOU TO OUR GENEROUS 2022 WALK FOR AUTISM SPONSORS

Event Sponsor

Gold Sponsors

Silver Sponsors

Bronze Sponsors

Sign and Resource Fair Sponsors



AUTISM SUPPORT OF KENT COUNTY
P. O. BOX 150348
GRAND RAPIDS, MI 49515
Phone: (616) 752-8577
www.autismsupportofkentcounty.org
Email: info@autismsupportofkentcounty.org

Do you **facebook** ?

To find our Facebook page, simply type **Autism Support of Kent County** in the “Search” bar located in the upper left corner. Click on “like” to join our page and receive updates. *Be sure to tell your friends and family!*

Disclaimers

Articles, conferences, workshops, presenters or information contained in this newsletter or at meetings are not endorsed by Autism Support of Kent County. Articles occasionally offer information about medical/pharmacological research, treatment and therapies or legal issues. This information is given for informational purposes and is not intended to act as a substitute for professional advice. Readers are encouraged to consult with their own practitioners for individual or specific advice.



Autism Support of Kent County

Autism Support of Kent County (ASK) in Grand Rapids, Michigan, is a non-profit 501(c)(3) organization of parents, school staff, and others who actively seek to support and advocate for persons with Autism Spectrum Disorder (ASD) and their families.

ASK is committed to partnering with local schools and agencies to promote the welfare of individuals with ASD in our community.

Please note that Autism Support of Kent County does not endorse any specific therapy, product, treatment, strategy, opinions, service, or individual.